

# AT&T Optical Private Line Service

## Fiber-Fast Speed, Multiple Options; Your Network, Designed by You

This transport service is quick and resilient - delivered over fiber facilities.

### This is a Different Private Line Service

This is today's private line. This is the service that can carry your multiple types of traffic, in bandwidths up to 10 Gbps over a single wavelength making it easy for you to connect and simple for you to grow and manage.

Whether your business requires high speed access for local offices, or nationwide coverage AT&T Optical Private Line Service can carry your voice, video and data traffic on a connection that fits your needs.

AT&T Optical Private Line Services meet the changing demands of your business including your need for more bandwidth and security to support new high speed data applications like network storage, business continuity and network consolidations. AT&T Optical Private Line can serve your needs with a local,

national and international reach. With a very broad range of service options, features and capabilities AT&T has the private line solution for you.

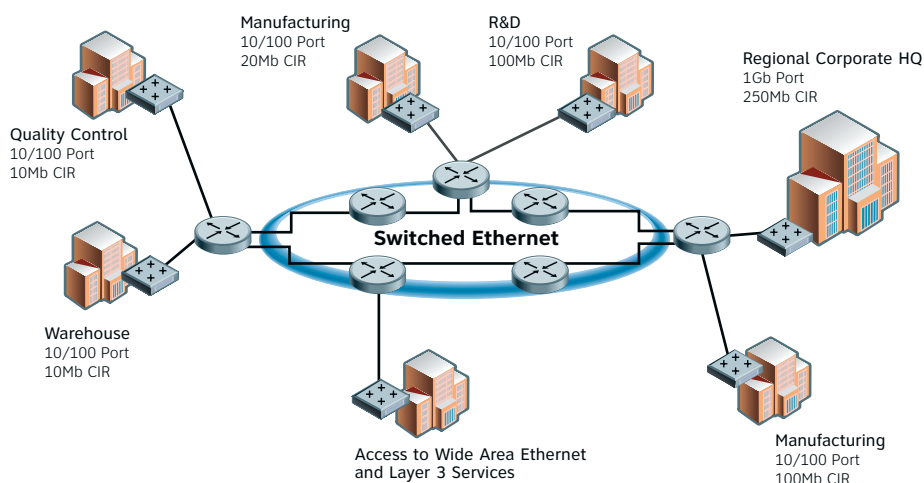
Optical means you get fully monitored service delivered on fiber optic cable with the interface that works best for your business. AT&T Optical Private Line Services can transmit data accurately at the speed of light providing near real time response without having to manage jitter and latency commonly found in switched data solutions.

Optical Private Line Services are fully managed which means AT&T monitors the network and dispatches technicians, often prior to you even noticing a network event. With AT&T Optical Private Line Service you get the flexibility and control you expect from your network via a solution designed for your business requirements, no matter how far your network reaches.

### Benefits

- High-speed connectivity; Tailored to your requirements
- Simplicity; Private line extended from your LAN to the MAN and across the WAN
- Reliability delivered; End-to-end servicing for all network elements
- Personalized Service; Single point of contact and designated work centers may support multiple services
- Peace of Mind; Around the clock monitoring and management
- Everything you need; Multiple services to meet your specific requirements
- Good investment; Consolidate traffic for cost effective solution that can adapt
- Availability where you need it; Extensive U.S. footprint and growing global presence

### Ethernet Virtual Private Line



- Be Ready for the Future. Get the service you need today and be confident that as your business changes AT&T can upgrade your current solution to meet your future transport needs.
- Extend your Reach. AT&T provides services that connect your Local Area Network (LAN) to the Metropolitan Area Network (MAN) and beyond to the Wide Area Network (WAN) as your business needs grow.
- Improve Productivity. AT&T provides 24 by 7 monitoring and management of your network services, helping to ensure fast restoration if trouble is identified and that your applications stay up and working.
- Get More for Your Money. Consolidate all of your applications onto a single robust connection that can handle it all.

**Can a Private Line be Flexible?**

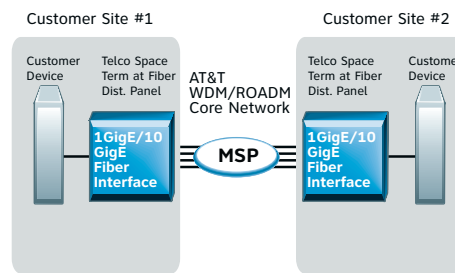
Yes – AT&T will design and customize a private line solution that best fits your current and future data networking needs. AT&T Optical Private Line Services deliver simplicity and connectivity with industry-leading SLAs. Choose the interface, diversity, and alternate routing options appropriate for your business. With one of the largest footprints in the U.S. and a variety of bandwidths, hand-offs and configurations (including an extension of ring services), we'll design a solution to meet your business applications needs.

**Delivering Private Line Choices for your Business Applications**

**Private Line – SONET**

Choose a SONET Private Line if you need a traditional SONET or Ethernet interface or want to consolidate multiple data types on to a single transport solution. You can run Ethernet, voice, video and data traffic across your service and extend or connect optical rings for the same level of control throughout. Options include reconfigurable bandwidth on demand with Optical Mesh Service, diverse entrance and protection.

**Private Line**



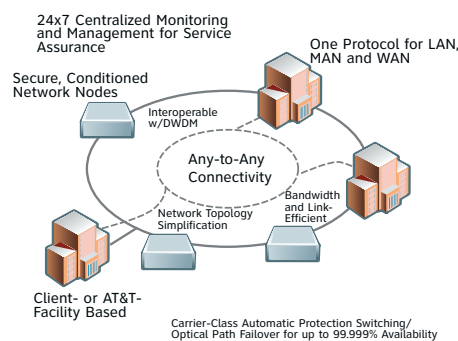
**Private Line – Wave**

AT&T utilizes a combination of Coarse Wave and Dense Wave Division Multiplexing to provide the most economical solution for your given application. AT&T wavelength services give you the ability to transmit nearly any protocol across the network and allow multiple waves to be transmitted simultaneously. That means you can transmit your storage protocols, Ethernet and SONET traffic all over a single fiber optic facility. AT&T Wavelength Private Line services give you options for protection and diversity so you get high reliability in a cost effective solution for transmitting your high bandwidth applications between two points or across a private network.

**Optical Rings – SONET and Wave**

In addition to all of the features mentioned, you can integrate multiple applications onto a seamless integrated ring for maximum efficiency and long term growth capability. You have many options to choose from when designing your Optical Ring service from

**Optical Rings**

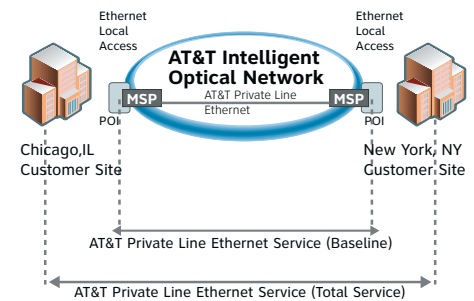


SONET to fully integrated DWDM with options for diverse entrance, protection, storage and upgrades. Traditional Optical Private Lines can connect rings together for a seamless nationwide network.

**Ethernet Private Line**

Connect your data centers or extend your Ethernet LAN with a familiar and proven technology. Ethernet Private Line delivers an Ethernet experience end to end in a private line connection. You can choose additional options like redundancy and diversity to further protect your investment. Choose Ethernet if your business is using IP based applications such as VoIP, video and data transmission. You can use Ethernet Private Line as access to larger networks, the Internet, as back-up or for load balancing your large network.

**Ethernet Private Line**



POI=AT&T Ethernet POP Point of Interface

**Ethernet Virtual Private Line (EVPL)**

This feature of Switched Ethernet service allows you the experience of a private line connection with the flexibility of Virtual Private LAN Service (VPLS). EVPL lets you connect your LAN or MAN through a switched Ethernet connection rather than a single connection across the network. You are using the features of a flexible MPLS core network which allows you to connect within a wider multipoint network and make changes as needed. You can use EVPL in your Metro or across a Wide Area Network, nationwide or globally and potentially save since you may only pay based on the ports or connections to the network and not mileage.

## AT&T Optical Private Line Service

Type of Service	AT&T Service Name	Features	Reach	Speeds	Interface
SONET Private Line	OCX Services	SONET Protocol: Multiple Channels including - Ethernet, Data, Analog, Voice, Video	13 States	OC3, OC12, OC48	SONET
	LightGate		9 States	STS 1, OC3, OC12, OC48, OC192	SONET
	OCx LD Services*		Nationwide	OC3, OC12, OC48	SONET
	Optical Mesh Service (OMS)	SONET Protocol and can re-route on demand in configurations of pt to pt and pt to multi-pt.	Nationwide	OC3, OC12, OC48	SONET
Wave Private Line	Wavelength Channel Service	Dense Wave Division Multiplexing: Multiple Channels and Protocols including: FICON, ESCON, SONET, Ethernet, Data, Analog, Voice, Video	9 States	1, 1.25, 2.5, 10 Gbps, OC3, OC12, OC48, OC192	SONET, Gig E, LAN/WAN PHY
	Wavelength Service Basic Arrangement – Intra-state		9 States	1, 1.25, 2.5, 10 Gbps, OC3, OC12, OC48, OC192	SONET, Gig E, LAN/WAN PHY, DWDM
	WAVEMAN®		13 States	2.5 Gbps, 10 Gbps, OC48, OC192	WAN PHY
	FibreMAN®	Storage Area Network Protocols: ESCON and FICON	13 States	1 Gbps, 2 Gbps	1 and 2 Gig Fibre Channel
Optical Ring Service	Dedicated SONET Ring Service	Dedicated SONET Ring: -SONET Protocol: Multiple Channels including - Ethernet, Data, Analog, Voice, Video	13 States	OC3, OC12, OC48, OC192	SONET, Gig E
	SMARTRing® Service		9 States	OC3, OC12, OC48, OC192	SONET, Gig E
	ACCU-Ring® Network Access Service		Nationwide	OC3, OC12, OC48, OC192	SONET, Gig E
	Ultravailable® Network Service	Dedicated DWDM Ring – Dense Wave Division Multiplexing: Multiple Channels and Protocols including: FICON, ESCON, SONET, Ethernet, Data, Analog, Voice, Video	Nationwide	OC3, OC12, OC48, OC192	SONET, Gig E 10 Gig LAN/WAN PHY
	Wavelength Dedicated Ring Service		9 States	OC3, OC12, OC48, OC192	SONET, Gig E LAN/WAN PHY
Ethernet Private Line	GigaMAN®	Ethernet Protocol: IP Services, Data, Internet	13 States	1 Gbps	Gig E
	DecaMAN®		13 States	10 Gbps	LAN/WAN PHY
	EPLS-MAN		Select Cities	50, 100, 150, 300 Mbps, 1 Gbps	Fast E, Gig E,
	EPLS-WAN		Nationwide	50, 100, 150, 600 Mbps, 1 Gbps, 10Gbps	LAN/WAN PHY
Ethernet Virtual Private Line	Ethernet Switched Service-MAN	Point-to-Point, Point-to-Multipoint and Any to any Switched Ethernet	Select Cities	50 Mbps to 1,000 Mbps	Fast E, GigE
	OPT-E-MAN®		13 States	2 Mbps to 1 Gbps	Fast E, Gig E
	Metro Ethernet Service		9 States	2 Mbps to 1 Gbps	Fast E, Gig E
	OPT-E-WAN®		Nationwide	1 M to 1 Gbps	Fast E, Gig E

\*International LD Services not included.

13 state territory includes: Arkansas, California, Connecticut, Illinois, Indiana, Kansas, Michigan, Missouri, Nevada, Ohio, Oklahoma, Texas and Wisconsin.

9 state territory includes: Alabama, Florida, Georgia, Kentucky, Louisiana, Mississippi, North Carolina, South Carolina and Tennessee.

